

# Technical data sheet

## Product features



### Rack conveyor dishwasher 270 racks/hour hot water, right exit

<b>Model</b>	<b>SAP Code</b>	00014495
--------------	-----------------	----------



- Display type: LCD ProSmart soft touch
- Number of programs: 4
- Number of skin: 2
- Maximal rack feed [racks/h]: 270
- Door clear height [mm]: 450
- Rack size [mm]: 500 x 500
- Water consumption of the washing cycle: 0,8 - 1,1
- Washing cycle time [s]: 13 - 25
- Detergent and rinse pump system: ProDose - accurate dosing with a peristaltic pump
- Wash pump type: two-way - DuoFlow
- Detergent dispenser: Yes
- Rinse aid dispenser: Yes

<b>SAP Code</b>	00014495	<b>Boiler power [kW]</b>	12.500
<b>Net Width [mm]</b>	2820	<b>Basin volume [l]</b>	70
<b>Net Depth [mm]</b>	770	<b>Tank power [kW]</b>	10.500
<b>Net Height [mm]</b>	1615	<b>Water consumption of the washing cycle</b>	0,8 - 1,1
<b>Net Weight [kg]</b>	383.00	<b>Washing cycle time [s]</b>	13 - 25
<b>Power electric [kW]</b>	28.200	<b>Maximal rack feed [racks/h]</b>	270
<b>Loading</b>	400 V / 3N - 50 Hz	<b>Door clear height [mm]</b>	450
<b>Boiler capacity [ l ]</b>	17.00	<b>Rack size [mm]</b>	500 x 500

# Technical data sheet

Technical drawing

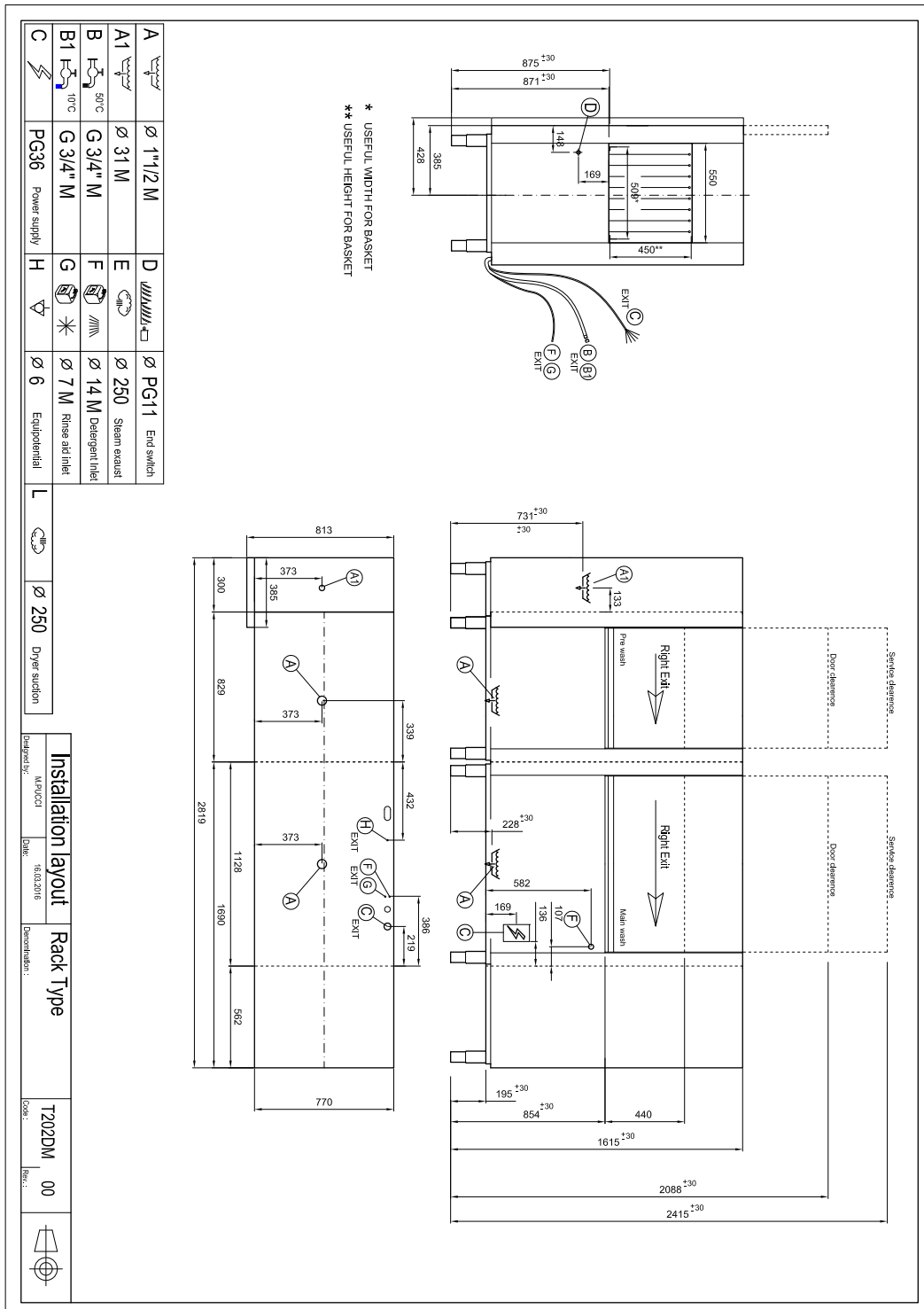


## Rack conveyor dishwasher 270 racks/hour hot water, right exit

Model

SAP Code

00014495



# Technical data sheet

## Product benefits



### Rack conveyor dishwasher 270 racks/hour hot water, right exit

Model	SAP Code	00014495
-------	----------	----------

**1** **Stainless steel outer shell construction**  
round construction with stainless steel, rounded edges, Deep-drawn bathtub  
– easy cleaning, high hygiene standard, long service life

**2** **LED Display**  
proScreen 4 local display + 2 LED strips  
– easy control of the dishwasher operation  
– continuous information on the status of the wash cycle  
– diagnostics in the event of a fault

**3** **Detergent dispensers**  
two detergent and rinse aid dispensers  
– precise chemical dosing by ProDose - precise dosing system for detergent and rinse aid by peristaltic pump setting of values via control panel

**4** **Double filter system**  
the chamber filter and the waste filter together with the ArchiMedes system provide a discharge system with increased water purification efficiency  
– higher washing efficiency; longer life of the washing bath

**5** **Energy saving**  
Energy Saving energy saving system due to lowering the temperature of the boiler  
– cost saving

**6** **Protection of fragile dishes**  
softStart system of gradual start of washing programs to protect fragile dishes  
– protects stemmed glasses and other fragile utensils

**7** **Possibility of recovery**  
saving up to 40% of boiler energy  
improves the comfort environment of the workplace environment without steam  
saves water  
– saving on energy and water costs; environmentally friendly system; safe system; pleasant workplace

**8** **Fast heating**  
Performance management allows the current running of the boiler and basins body  
– quick first warm-up of the dishwasher  
– smooth operation

**9** **Air break tank**  
the open system of the boiler rinse, in cooperation with the rinse pump, ensures a constant pressure and temperature of the rinse  
– possibility to use in HACCP systems water temperature suitable for sterilization

**10** **Sliding system**  
a sliding system that moves the baskets through individual washing zones, the possibility to connect the drive to automatic tables  
– quick distribution of dirty dishes

# Technical data sheet

## Technical parameters



### Rack conveyor dishwasher 270 racks/hour hot water, right exit

<b>Model</b>	<b>SAP Code</b>	00014495
--------------	-----------------	----------

**1. SAP Code:**

00014495

**15. Number of programs:**

4

**2. Net Width [mm]:**

2820

**16. Opening of device:**

Retractable up

**3. Net Depth [mm]:**

770

**17. Door clear height [mm]:**

450

**4. Net Height [mm]:**

1615

**18. Inlet pressure:**

2-4bar

**5. Net Weight [kg]:**

383.00

**19. Adjustable feet:**

Yes

**6. Gross Width [mm]:**

2500

**20. Number of skin:**

2

**7. Gross depth [mm]:**

920

**21. Modular construction:**

Yes

**8. Gross Height [mm]:**

1800

**22. Pre-wash module:**

Yes

**9. Gross Weight [kg]:**

420.00

**23. Maximal rack feed [racks/h]:**

270

**10. Device type:**

Electric unit

**24. Self-cleaning cycle:**

No

**11. Control type:**

Digital

**25. Boiler capacity [ l ]:**

17.00

**12. Material:**

AISI 304

**26. Boiler power [kW]:**

12.500

**13. Power electric [kW]:**

28.200

**27. Basin volume [l]:**

70

**14. Loading:**

400 V / 3N - 50 Hz

**28. Tank power [kW]:**

10.500

# Technical data sheet

## Technical parameters



### Rack conveyor dishwasher 270 racks/hour hot water, right exit

<b>Model</b>	<b>SAP Code</b>	00014495
--------------	-----------------	----------

**29. Number of washing arms:**

5

**30. Number of rinsing arms:**

6

**31. Washing arm type:**

Firm

**32. Washing arm material:**

Stainless steel

**33. Atmospheric boiler with rinse pump:**

Yes

**34. Rinsing arm type:**

Firm

**35. Rinsing arm material:**

Stainless steel

**36. Deep drawn tank:**

Yes

**37. Rack support:**

welded

**38. Tank surface strainers:**

stainless steel

**39. Boiler thermostat adjust:**

Yes

**40. Rack feed capacity:**

140-200-270

**41. Detergent and rinse pump system:**

ProDose - accurate dosing with a peristaltic pump

**42. Hot water electric valve:**

Yes

**43. Rack size [mm]:**

500 x 500

**44. Min supply water temperature [°C]:**

45

**45. Max supply water temperature [°C]:**

60

**46. Display type:**

LCD ProSmart soft touch

**47. USB port:**

Yes, for Firmware actualisation

**48. Self-diagnostics:**

Yes

**49. Double rinse:**

Yes

**50. Wash pump type:**

two-way - DuoFlow

**51. Detergent dispenser:**

Yes

**52. Rinse aid dispenser:**

Yes

**53. Water consumption of the washing cycle:**

0,8 - 1,1

**54. Washing cycle time [s]:**

13 - 25

**55. Rinse water temperature [°C]:**

82

**56. Standard equipment for device:**

1x glass basket, 1x plate basket, 1x cutlery basket

# Technical data sheet

Technical parameters



Rack conveyor dishwasher 270 racks/hour hot water, right exit

Model

SAP Code

00014495

**57. Additional information:**

High-performance pre-wash module XL

**58. Program ProSpeed:**

No

**59. Program ProFessional:**

No

**60. Program ProFessional 2:**

No

**61. Program ProFessional 4:**

No

**62. Program ProFessional 6:**

No

**63. Program ProFessional 8:**

No

**64. Program ProFessional 10:**

No

**65. Program ProTemp:**

No

**66. Program ProSelf:**

No

**67. Program ProClean:**

No

**68. Program ProDrain:**

No

**69. Program ProEco:**

No

**70. Program ProNew:**

No

**71. Program ProLong:**

No

**72. Program ProGlass:**

No

**73. Program ProPlates:**

No

**74. Program ProCold:**

No

**75. Program ProWater:**

No

**76. Program ProActive:**

No

**77. Program ProActive 5:**

No

**78. Program ProActive 7:**

No

**79. Program ProSteel:**

No

**80. Program ProSan:**

No

**81. Program High Capacity:**

Yes

**82. Program General purpose:**

Yes

**83. Program Prolonged contact (DIN 10534):**

Yes

**84. Program Glasses:**

Yes